

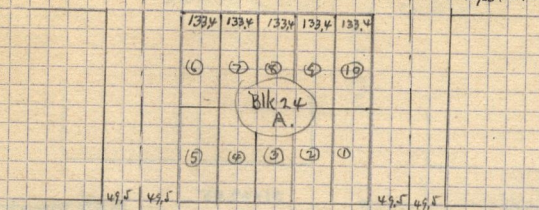
133

57
83

Lucy H. Odell to Geo. A. Barry - Aug. 14-08

Pf Lot 8 - Blk 24 - Plat A, Dec. S. Beg. N.E. Cor, said Lot 8 - S 10 rods W. 30.
ft, N 10, rods E. 30 ft. to E. cor.

24th Str. 766.0 90° 51' 115+25.79 316.3 115+27.34 A



25th Str. 107+67.1 766.0 107+67.4 A

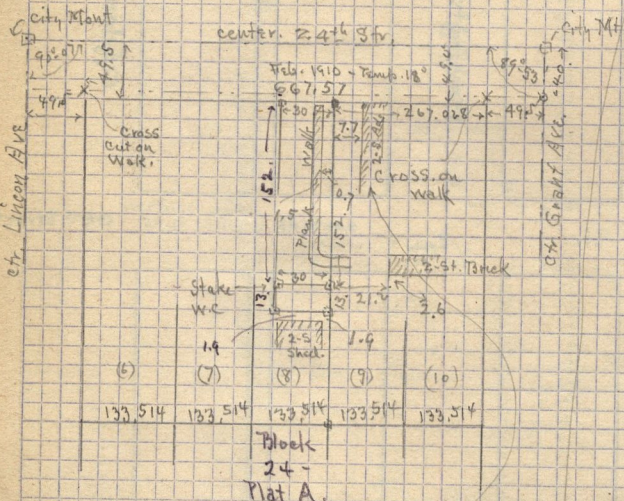
94+55.2 Lincoln

92+51.4 Grant

Detail of Survey
of Possessory Fence Lines on
West side of Ogden Avenue
South of 36th Street.
April 26th 09.
(See page 137)

24+31.85 ctr. 36th Str.

23+98.55 24+00.09 $\frac{\text{Fence}}{\text{Property Line}}$



center. 24th Str.

Feb. 1910 - Temp. 118°
567157
267.028 49.4

Stake W.C. 13.2 1.9 2.5 1.9 2.5 1.9 2.5 1.9 2.5 1.9

133.514 133.514 133.514 133.514 133.514

Block 24 - Plat A.

2-story Adobe Bldg

Certificate issued Feb 7-1910

2 Fences along West side of above
one being on line - and one
1.5 farther west of line & parallel
thereto.

a x cut on Stone Curb off the N.W. Cor. of
said block - S.E. & S.W. corners full in lumber
pile - not set.

Block 21 - Lake View A (old)

23
22+75.09 x x x x
22
22+00.09 x x x x
21
21+24.89 x x x x
20
20+00.09 x x x x
19
19+50.09 x x x x
18
18+24.19 x x x x

N. Line 37th Str.
17+48.85 17+34.39 x x x x
37th Str.
16+82.55 16+98.19 x x x x
S. Line 37th Str.

Ogden Avenue